

ACCESSORIES

SKD-2 FLOW CONTROLLER



FLOW CONTROL SWITCH

SKD-2

MAXAM



Operation and Application

The SKD-2 flow control switch starts the pump automatically when pressure decreases (for example taps are opened) and stops it when there is no flow/water shortage (for example taps are closed). It can be used for drinking water or non-potable water piping systems.

Operating limits

Flow from 0 to 6m³/h.

Pipe Water Temperature:

0 - 60°C (but not frozen)

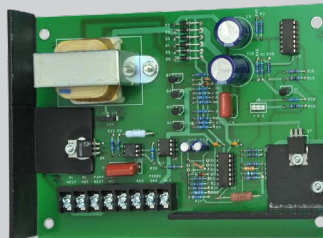
Ambient Temperature:

0 - 45°C

Technical features

Rated Voltage:	220VAC, 50Hz
Maximum current:	10 A
Protection grade:	IP65
Starting pressure:	1.5 bar
Maximum pressure:	10 bar
Inlet/outlet size:	(1" x 1") BSP

REPLACEABLE PC BOARD



ADJUSTABLE PRESSURE



cut in pressure adjustable between 1.2 & 1.5 bar

MODEL	INPUT VOLTAGE	FREQUENCY	CURRENT	POWER	
	(V)	(Hz)	(A)	(W)	(HP)
SKD-2	220	50	10	1500	2

Sectional drawing

